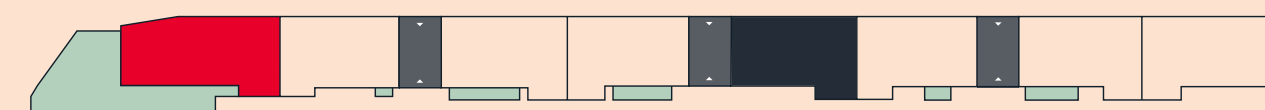
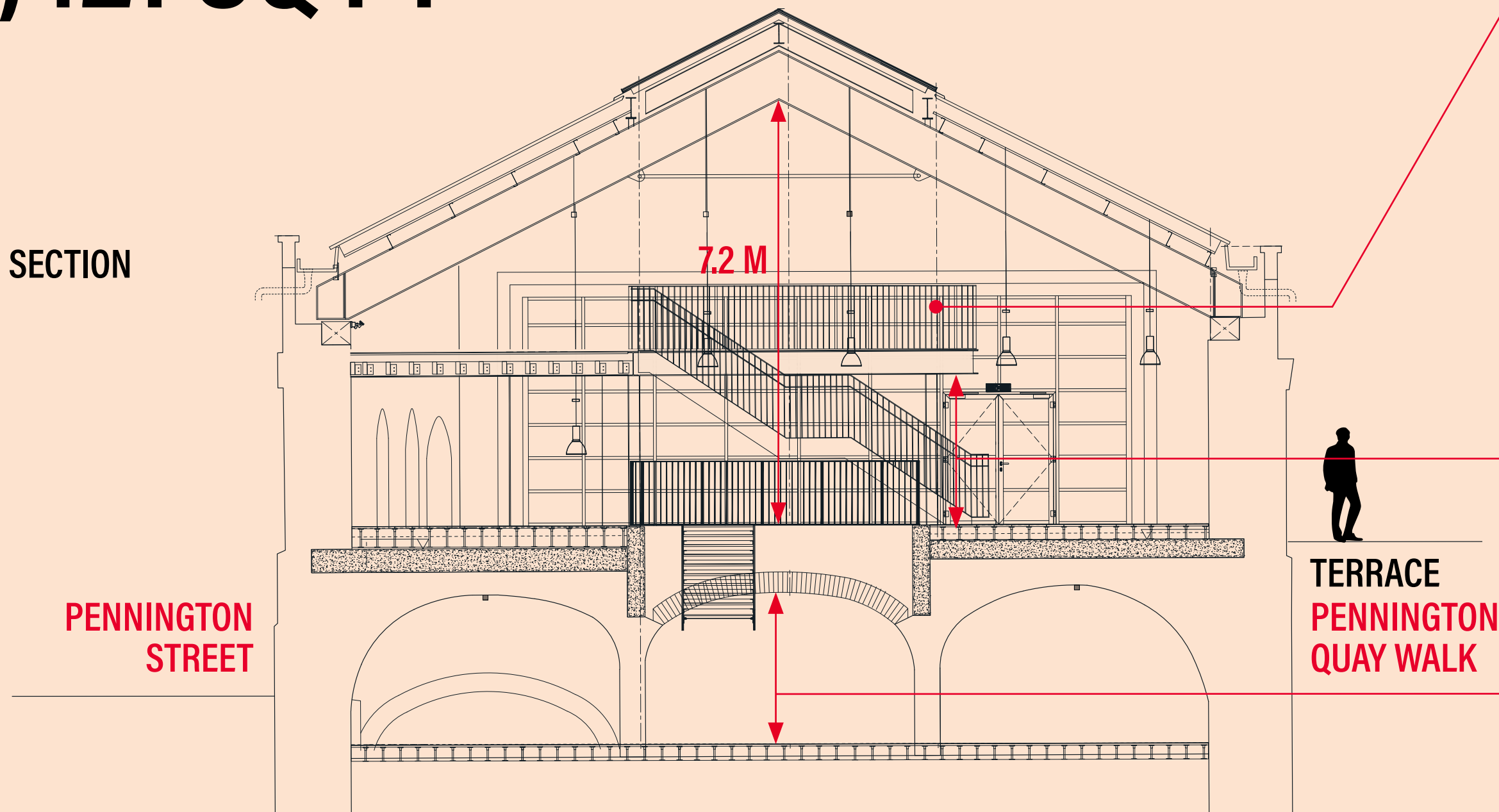


# THE SILK STORE

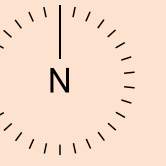
TOTAL AREA  
**13,421 SQ FT**

CROSS SECTION

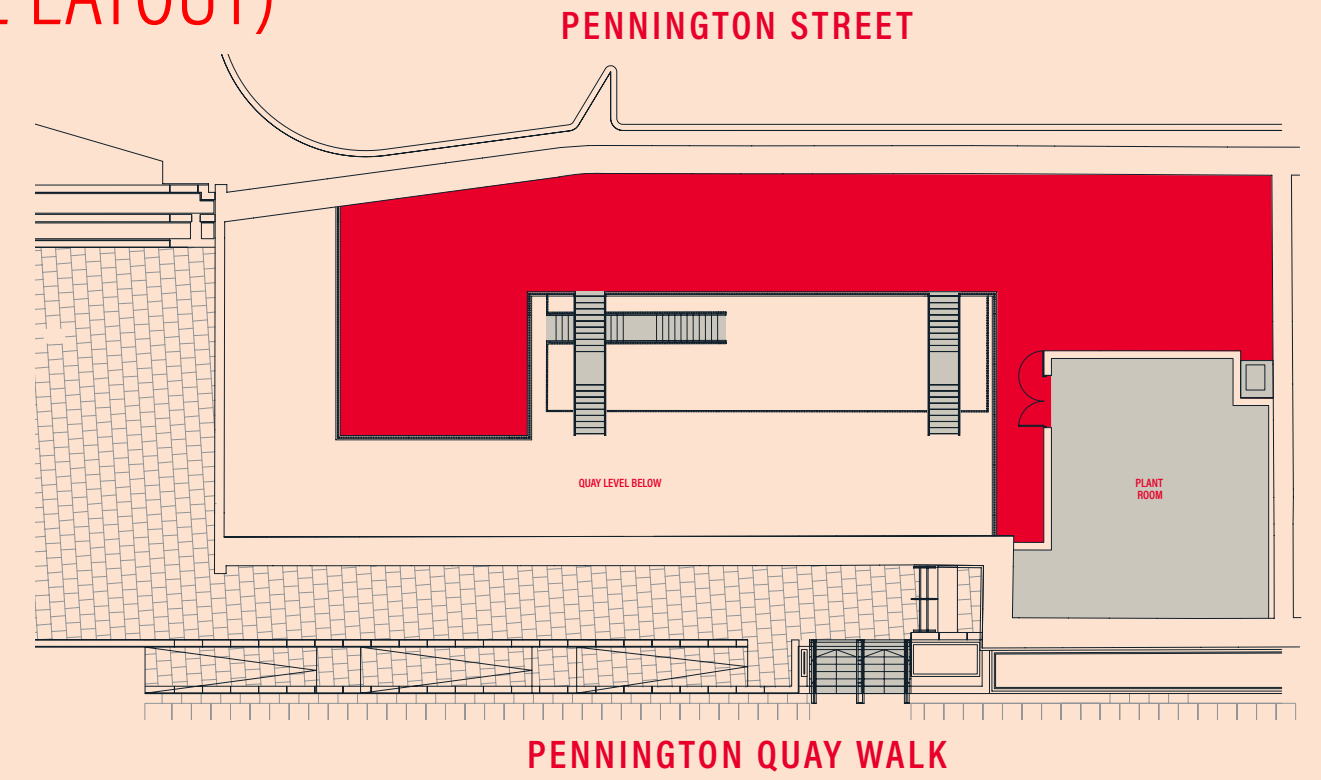


Due to the historic nature of the warehouse, variations across dimensions are expected, therefore these are approximate. Indicative staircase and mezzanine as shown on plans.

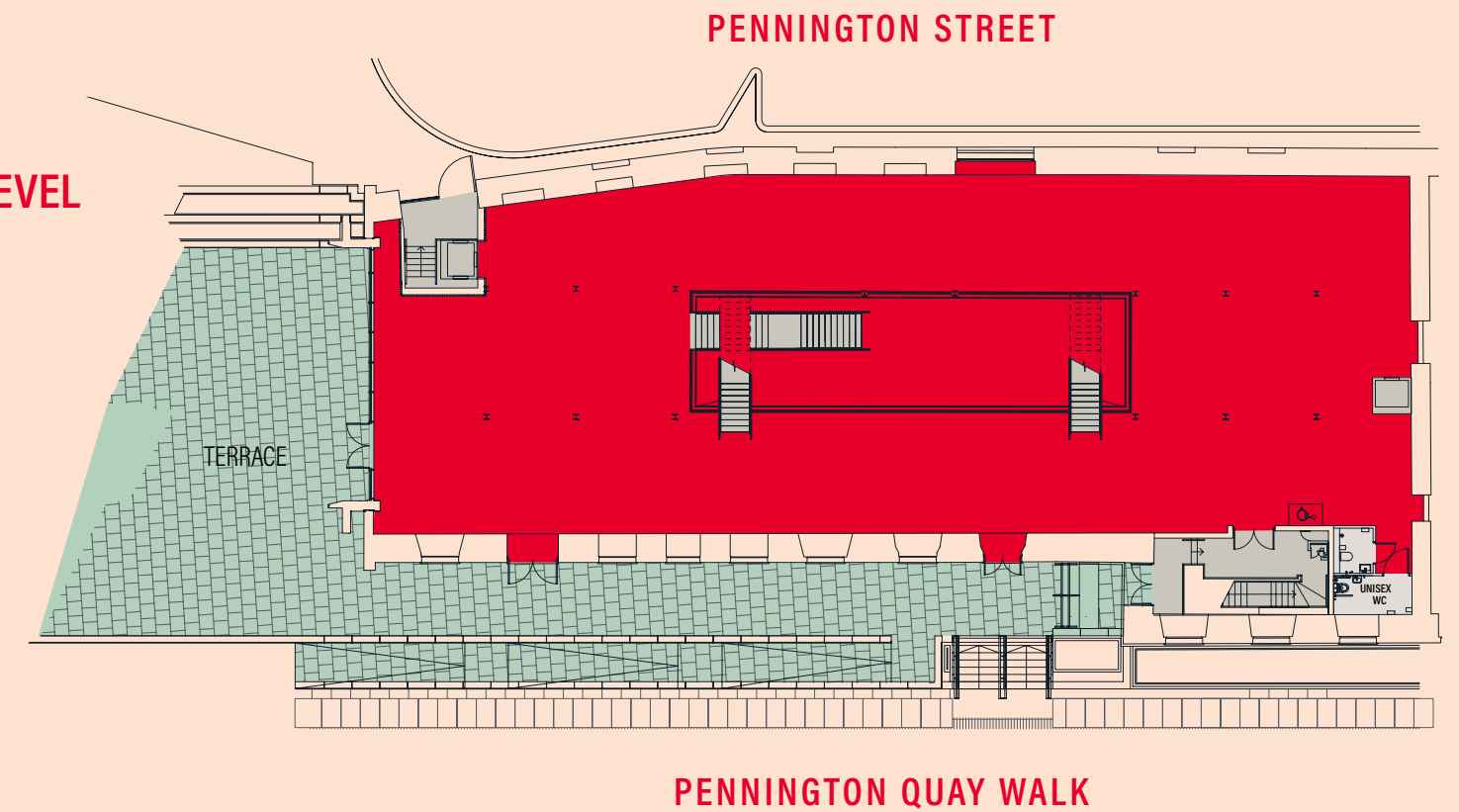
## FLOOR PLANS (SPECULATIVE LAYOUT)



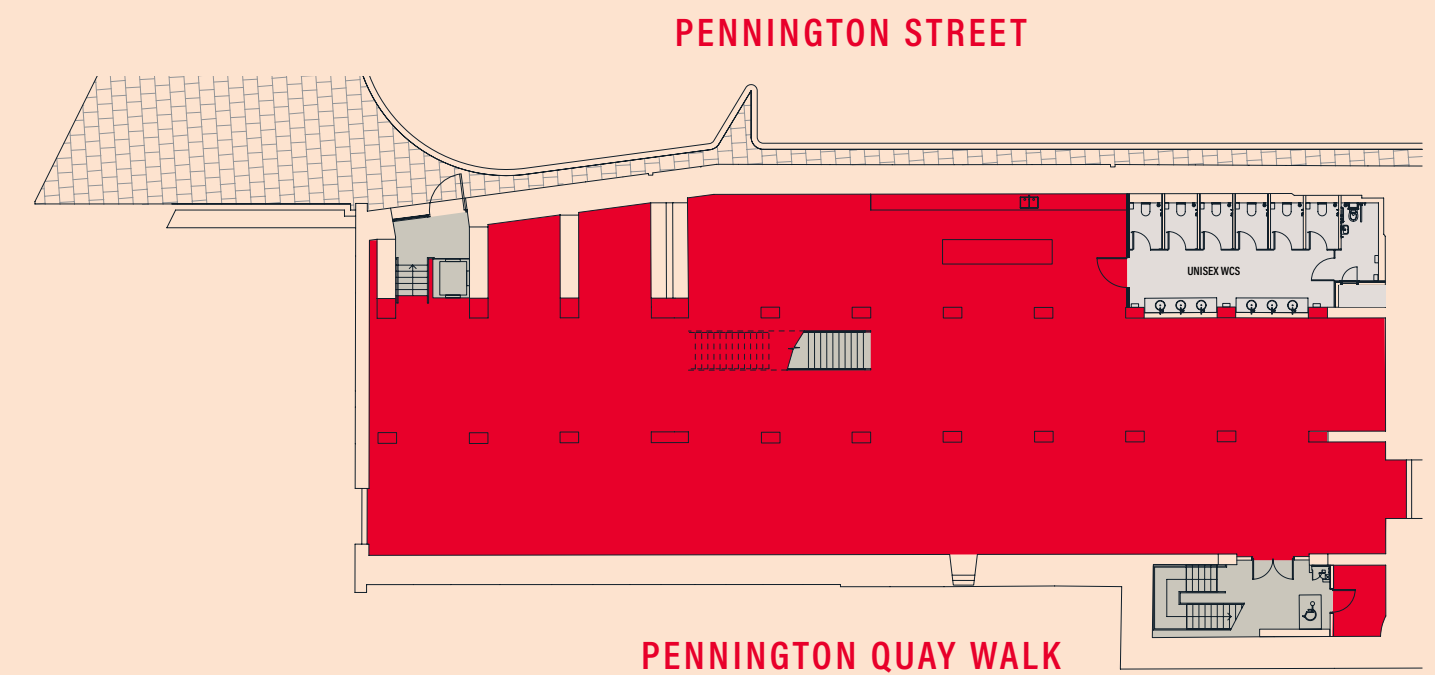
LEVEL 1  
2,799 sq ft



QUAY WALK LEVEL  
5,673 sq ft  
±2.6M

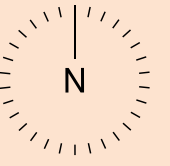


GROUND LEVEL  
5,651 sq ft  
±2.5M



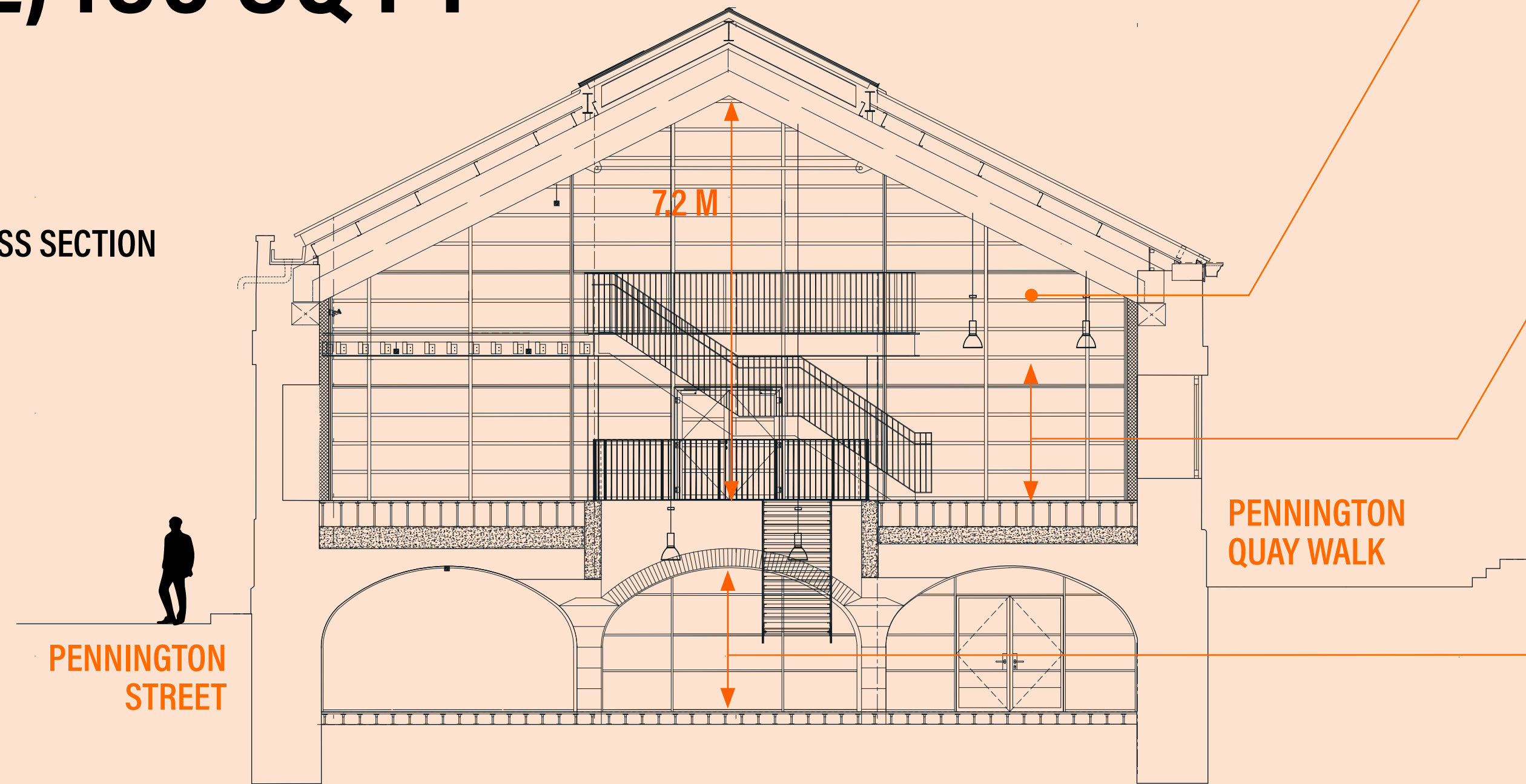
# THE WINE YARD

## FLOOR PLANS

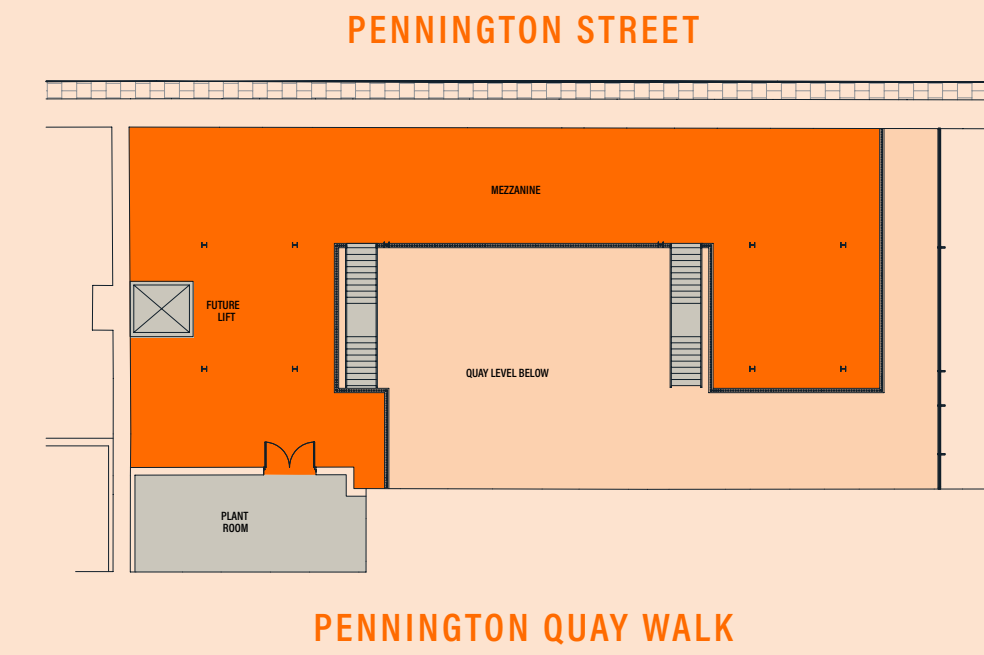


TOTAL AREA  
**12,486 SQ FT**

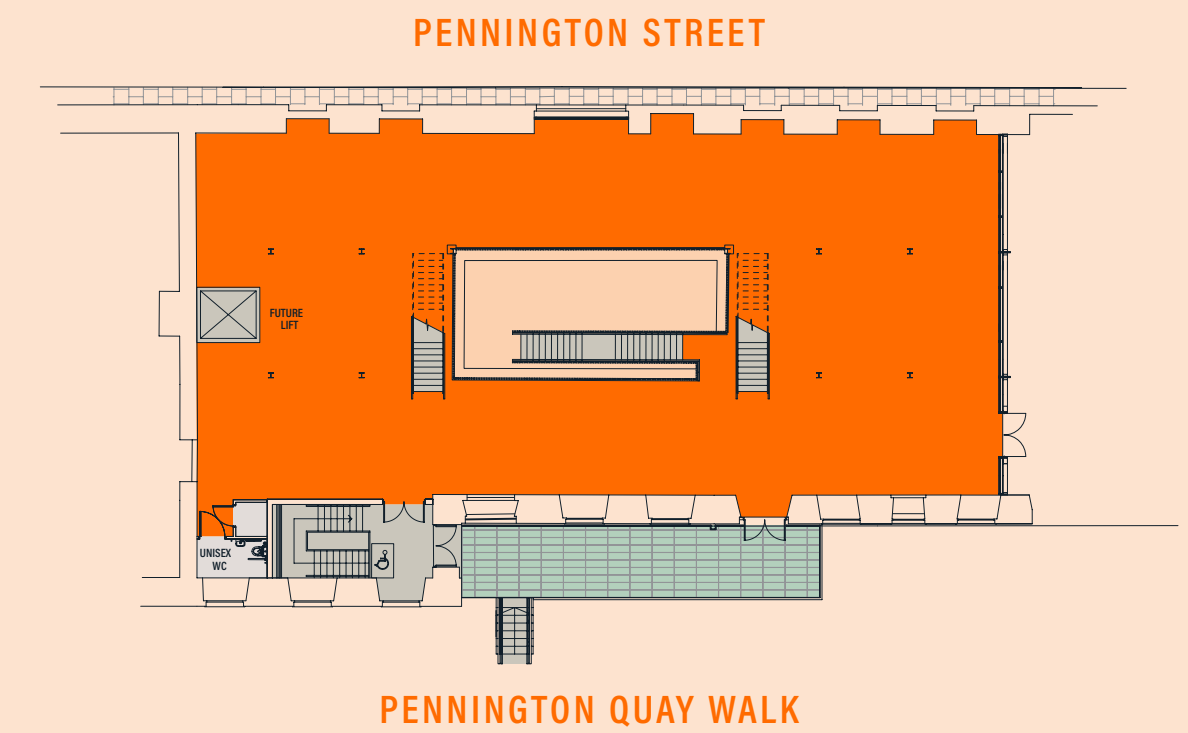
### CROSS SECTION



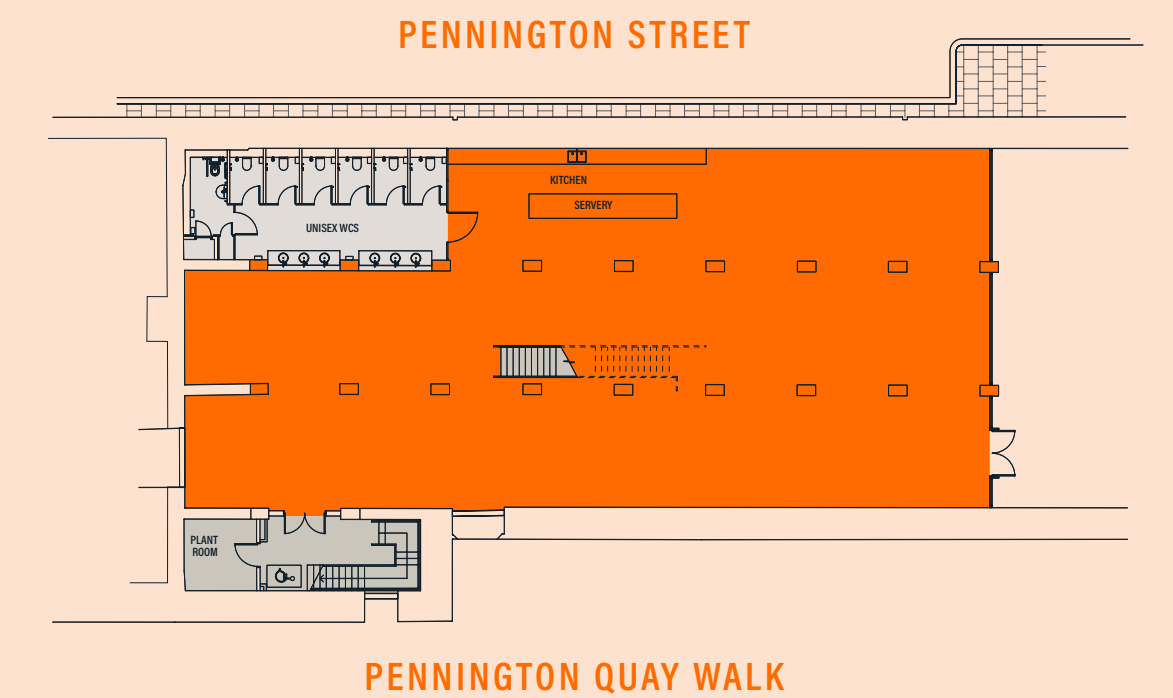
**LEVEL 1**  
2,852 sq ft  
SEE LARGER PLAN



**QUAY WALK LEVEL**  
4,779 sq ft  
± 2.6M  
SEE LARGER PLAN



**GROUND LEVEL**  
4,564 sq ft  
± 2.7M  
SEE LARGER PLAN



Due to the historic nature of the warehouse, variations across dimensions are expected, therefore these are approximate.

